

CSCS-/RCB–Colloquium

Thursday, April 25th, 2 p.m.
H53



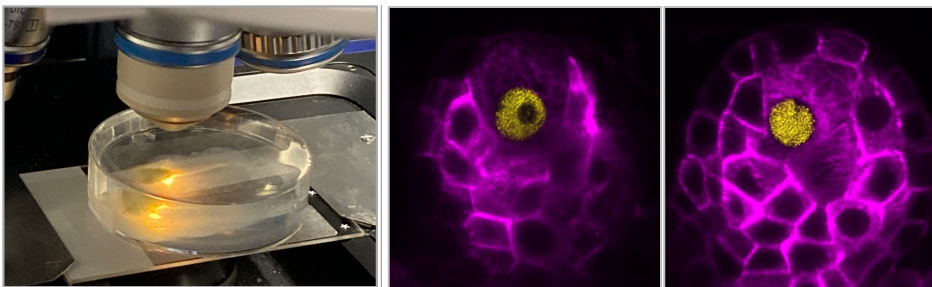
Dr. Martina Balboni

University of Hamburg

(*Developmental Biology*)

“Control of Entry into the Female Germline in Maize”

Germline formation is a key event in the life cycle of flowering plants. Somatic cells in reproductive organs are reprogrammed to produce stem cell-like cells. From these cells, a meiocyte undergoes meiosis and thereby initiates a germline. The Balboni lab developed a live cell imaging system that allows following female meiocyte formation by confocal laser scanning microscopy over several days. An important foundation for this approach was the establishment of culturing conditions of the specimen during image acquisition and the generation of a series of fluorescent reporter lines that highlight characteristic aspects of meiosis. Among others a detailed time course and a cytological framework of germline entry in maize will be presented.



Host: Prof. Dr. Thomas Dresselhaus <thomas.dresselhaus@ur.de>



Universität Regensburg

Cell Biology & Plant Biochemistry